

ROLLER SHADE



OPERATOR'S MANUAL




Joseph Allen
WINDOW INTERIORS

CHILD SAFETY



! WARNING

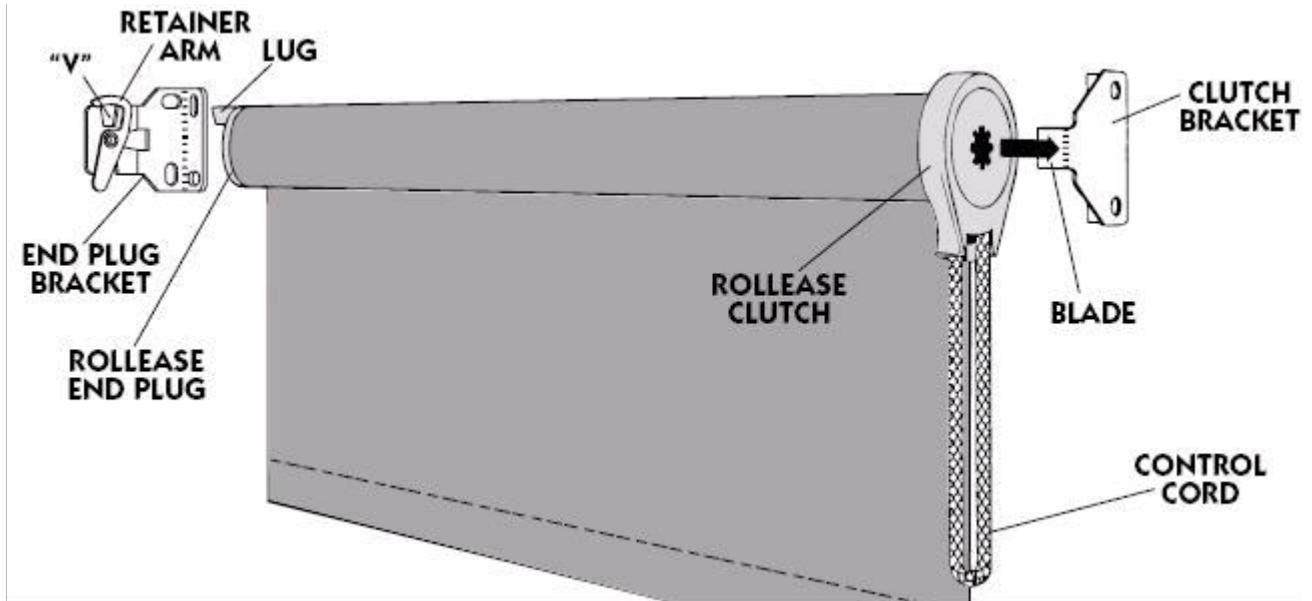
**For more safety information call 1-888-501-8364
in the U.S. or 1-866-662-0666 in Canada.**

Young children can STRANGLE in beaded cord loops. They can also wrap beaded cord loops around their necks and STRANGLE.

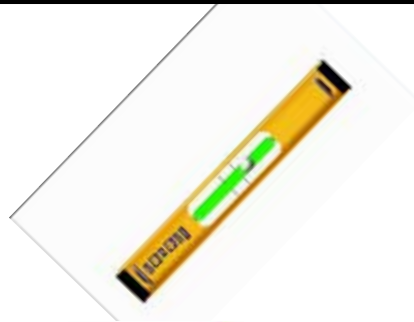
- Always keep beaded cord loops out of the reach of children.
- Move cribs, playpens and other furniture away from beaded cord loops, Children can climb furniture to get to the beaded cord loops.
- Attach the cord tensioner on the beaded cord loop to the wall or window casement. This can prevent children from pulling beaded cord loops around their necks.
- Use the provided tensioner installation kit, with instructions, for attaching the cord tensioner. For the shade to operate properly, the cord tensioner must be correctly mounted and secured.
- Only the supplied cord tensioners and hardware should be used. Replacement parts can be obtained by contacting Joseph Allen.



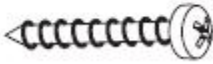
Be aware that it is possible for children to become entangled in window covering cords. To reduce the risk of accidents, all cords must be kept out of reach of children. Cord tensioners are an effective way to implement this essential precaution. To mount the cord tensioner at a safe height, take into account furniture or other objects upon which a child may climb. Cord tensioners keep the continuous cord loops taut to prevent children and pets from becoming entangled and hurting themselves. Cord tensioners must be used with all shades to comply with the Consumer Product Safety Commission (CPSC) Child Safety Guidelines.

PARTS



TOOLS

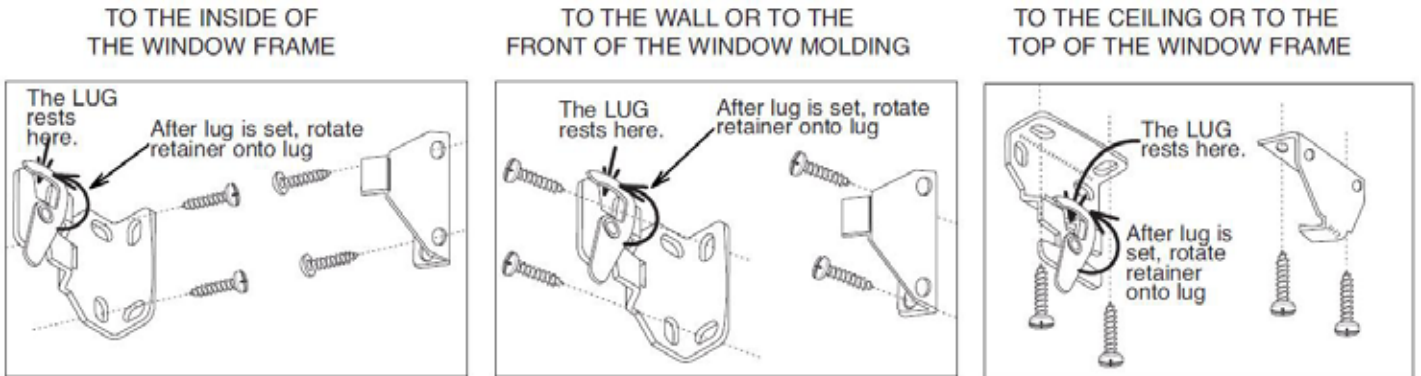


Mounting Surface	Fastener	
Wood	No. 6 Hex Head Screws (Provided)	
Drywall, Plaster	Wall Anchors, Expansion Bolts (Not Provided)	
Metal	Sheet Metal Screws (Not Provided)	

INSTALLATION INSTRUCTIONS

1. MOUNT THE BRACKETS.

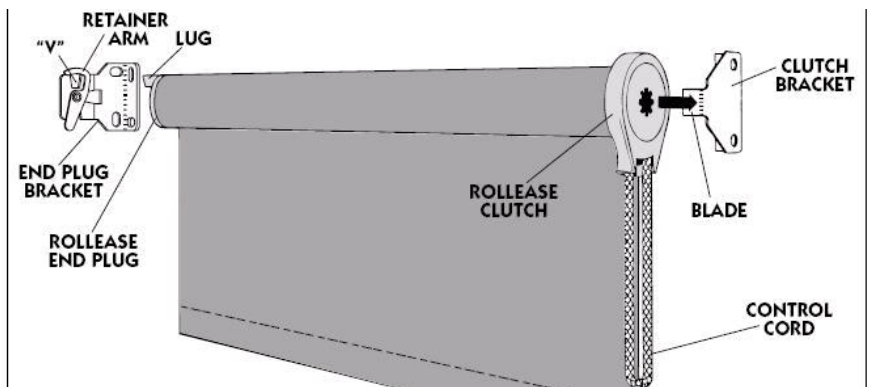
If the clutch is on the right end of the shade, attach the brackets to the window frame, window molding, wall or ceiling, as shown below. If the clutch is on the left end of the shade, reverse the bracket positions, left for right.



2. INS TALL THE SHADE.

a. Push the clutch straight onto the blade of its bracket. The bottom of the clutch should always point straight down.

b. Lower the lug of the end plug onto the "V" of its bracket. The roller should fit in the brackets securely, with just a little play. Rotate the riveted retainer portion to lock the lug in position.



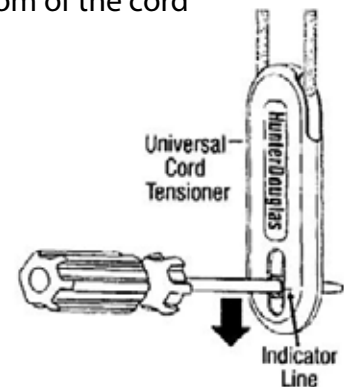
3. INSTALL THE TENSION DEVICE

Before doing anything, you must first slide the cord tensioner to the bottom of the cord loop.

a. Insert a small screwdriver, punch, or awl through the screw hole at the bottom of the cord tensioner.

b. Move the screw hole down to the indicator line to release the safety mechanism.

c. Slide the cord tensioner down to the bottom of the cord loop.



WARNING: It is imperative that the cord tensioner be properly secured to the wall or window frame to reduce children's access to the cord loop. Young children can strangle in cord loops. They can also wrap cords around their necks and strangle.

CAUTION: The shade will not operate properly unless the cord tensioner is secured.

OPERATING INSTRUCTIONS

4. USE THE CONTROL CORD TO OPERATE THE SHADE.

Pulling gently on the cord in one direction raises the shade; pulling it in the other direction lowers it.

On shades where the fabric rolls against the window, the front cord does the raising. On shades where the fabric rolls toward the room, the rear cord does the raising.

5. ATTACH STOPS TO A CONTROL CORD THAT IS MADE OF BEAD CHAIN.

On metal bead chain, attach a metal stop ball that is at least 5/16" (8mm) in diameter, so that it touches the mouth of the clutch when the shade is in the all-rolled-up position.

For metal or plastic bead chain, lower the shade to sill or floor height, and attach the appropriate metal stop or plastic connector next to the clutch, this prevents the shade from being lowered beyond that point.

CLEANING INSTRUCTIONS

Occasional light vacuuming with a soft bristle attachment or gentle feather dusting is all that is required to keep your shades looking fresh and neat. You could also soak a sponge or damp cloth with the soapy solution and gently wipe or blot the stain from the fabric. To dry, use a hair dryer on COOL setting, and allow the shade to air dry completely before raising. Never use an alcohol or ammonia based cleaner.

TROUBLESHOOTING

Problem	Solution
Shade will not roll up all the way/difficult to operate	First, make sure the brackets are not rubbing against the ends of the roller or that the brackets have not been bent. Pull the shade partially down. Remove from brackets. Increase tension by rolling up the shade two revolutions. Replace in brackets and test. Repeat procedure until the shade rolls up with proper tension.
The shade does not roll up straight (telescoping)	Some fabrics have a tendency to telescope to one side or the other when being rolled up. To fix this, unroll the shade until you can see where the fabric is attached to the roller, put a small piece of masking tape at the attachment on the opposite end from where the shade is telescoping. A second or third piece can be placed on to fix more extreme telescoping issues.
Shade rolls up too fast/does not catch.	Decrease the tension by raising the shade to the top and removing it from the brackets. Unroll approximately 18" by hand and then replace brackets. Repeat until proper tension is achieved.

LIMITED LIFETIME WARRANTY INFORMATION

Joseph Allen warrants that its window treatments will be free from defects in materials and workmanship for as long as the original residential purchaser owns the product, provided that the product was installed properly and in accordance with the installation instructions. The limited lifetime warranty is extended to the original residential purchaser only, in the original window for which it was installed.

COVERED

Entire product against manufacturing defects (i.e. flaw in design, material or workmanship that causes the product to no longer work properly)..... Lifetime

time	Clutches & Hardware.....	Life-
	Cords & Chains.....	3 Years
	Fabrics.....	5 Years
	Motors.....	5 Years
	Motorization Accessories.....	1 Year

NOT COVERED

This warranty does not cover normal wear and tear or any damage or loss caused by abuse or misuse, improper installation, or improper cleaning as well as any batteries that may have come with your product. All materials can lose original intensity after long exposure to the sun. When left for extended periods in direct sunlight, plastics and pvc tends to crack and discolor. All cords will eventually wear out. Joseph Allen considers these things normal wear and tear not covered by this warranty. Colors and textures vary from lot to lot and may not exactly match sample swatches or previous purchases. Products ordered outside of the recommended manufacturing specifications are not covered by this warranty. Any products that fail due to:

- Abuse
- Accident
- Alterations
- Damage from pets/insects
- Exposure to salt air
- Extraordinary use
- Improper cleaning
- Improper handling
- Improper Installation
- Improper operating
- misapplication
- misuse

Natural wood products that have:

- Variations in color, grain, or texture
- Warping of wood slats in high-humidity areas

Costs associated with:

- Product removal
- Product remeasure
- Product reinstallation
- Transportation to and from retailer
- Incidental or consequential damages
- Shipping

HOW TO GET SERVICE

Contact the distributor from which the shade was bought and make a claim.

WARRANTY RESOLUTIONS

If this Joseph Allen product is found to have a manufacturing defect in materials or workmanship, we will (at our discretion) do one of the following:

- Repair product
- Replace product
- Refund the cost of product

YOUR RIGHTS IN ACCORDANCE WITH STATE LAW

This warranty gives you specific legal rights, and you may also have other rights which vary from state to state. This warranty supersedes any previous versions and is not subject to change by any representative, dealer or unauthorized employee.

